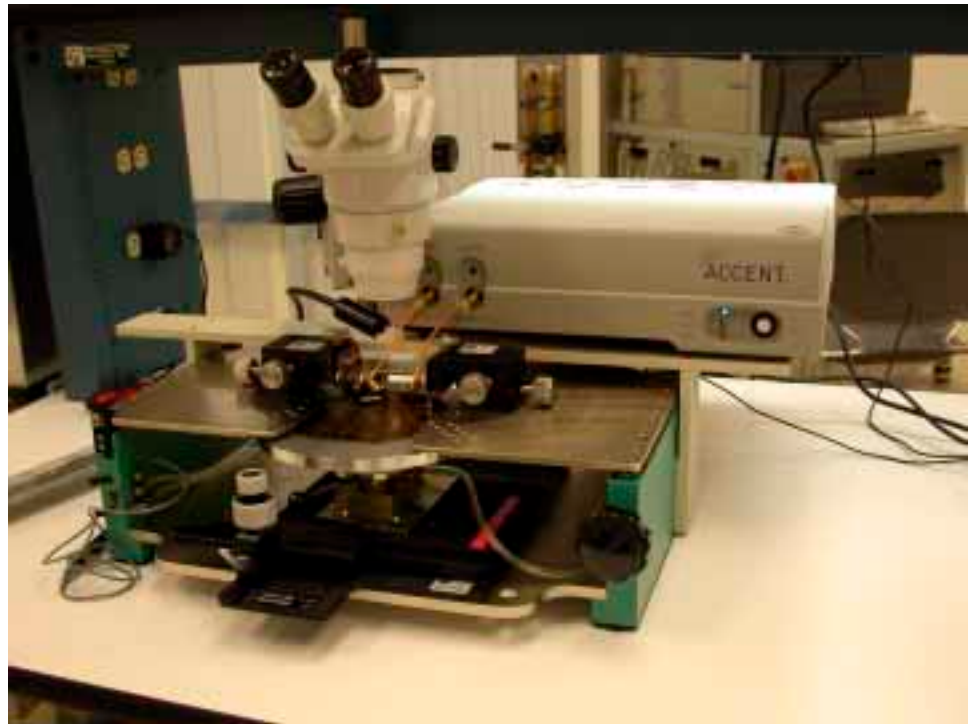


## **JR-2745 with Mezzanine Shelf and DiVA 225**

Picture to right is the Jr-2745 with an optional mezzanine shelf installed. The Accent DiVA 225 placed on the shelf. The mezzanine shelf on the Jr-2745 allows the DiVA 225 to be positioned very close to the probes. The bottom right photo gives a detail of the probing area.



### **Features**

The input/outputs of the DiVA 225 can be connected to the probes with a cable 4" long with right angle connectors on each end. The probes still have a full 1" range of movement. The microscope and swing arm are snugly nestled on the left front of the DiVA 225, but still allow adjustment. Access to the right hand side DiVA 225 controls is unobstructed. Connectors can be easily attached by swinging away microscope to left which allows clear access to probing area and DiVA 225. Mezzanine can easily be removed by unfastening 4 1/4"-24 screws on side brackets to return Jr-2745 to the full top plate configuration. Shelf is 2.5" by 28". Back of DiVA 225 is supported with a lab jack stand. Velcro™ fasteners stabilize the front of the DiVA 225 on the shelf and lab jack stand. Jr-2745 and DiVA 225 combination fits easily on a 30" deep lab test bench.

