



## CMOS USB 2.0 MICROSCOPE CAMERA

### Features

- USB 2.0 Interface  
No Framegrabber required  
Single Cable Interface
- Low Noise
- Progressive Scan 1.3 Megapixel
- Full Color preview window
- RGB Data Capture  
30-bit Color depth - 1024 levels
- Video coupler/Microscope adapter
- Software Compatible with:  
Windows XP  
Windows 2000

### Benefits

- Camera control through an intuitive user TWAIN interface results in rapid image capture archiving and documentation for high throughput applications, demanding research environments and teaching facilities.

### Description

J microTechnology, Inc offers the NAT-30 Microscope Camera system. This system is based on the INFINITY1-1 digital camera. It is designed to be a cost-effective, versatile solution for clinical, life science, materials science and educational professionals. With 1280x1024 resolution and on-board processing, the INFINITY1-1 delivers outstanding image quality for a wide variety of scientific applications attached to J microTechnology probing systems. Live video preview provides for real-time focus. Auto exposure and auto white balance efficiently captures your optimal image. An intuitive user application provides camera

controls, while full integration to popular third-party imaging applications is available through our TWAIN drivers. The USB 2.0 digital interface ensures a simple plug and play installation - and one standard cable minimizes camera clutter. No frame grabber required.



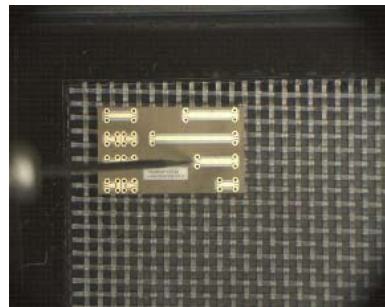
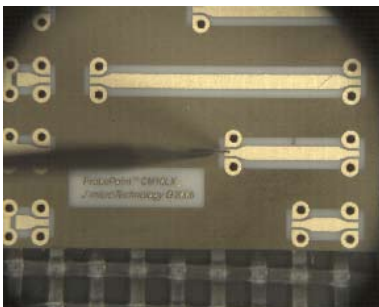
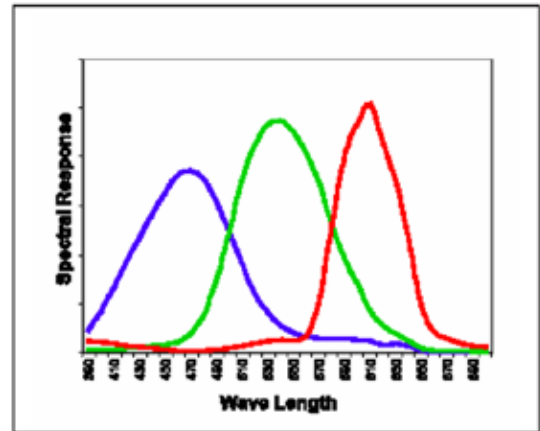
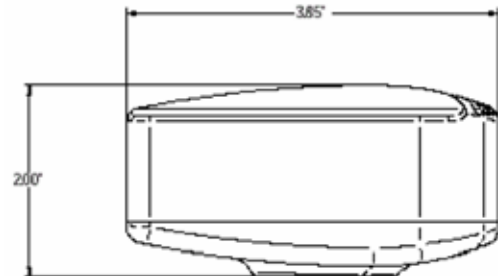
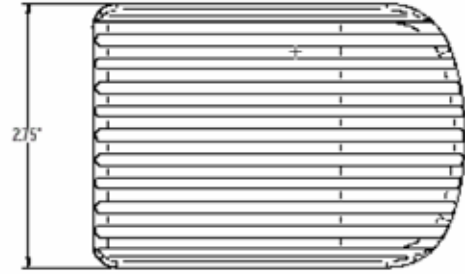
### Models

- **NAT-30/27T**  
USB Camera w/ 1.0X C-Mount Adapter  
(NAT-27T Compatible)
- **NAT-30/09T**  
USB Camera w/ 0.5X C-Mount Adapter  
(NAT-09T Compatible)

# NAT-30

<b>Camera Sensor</b>	
Image Sensor	1/2" CMOS format, color or monochrome, 6.5mmx5.3mm array
Effective Pixels	1280x1024, 5.2um square pixels
Frame Rate	15 fps at 1280x1024, 60 fps at 640x480
Dynamic Range	>60dB
Digital Output	8 and 10-bit uncompressed
Read Noise	20 e- rms

<b>Camera Controls</b>	
Mass	300g
Power Requirement	USB bus power, or external 5VDC - 500mA
Power Consumption	-2.5Watts
Operating Temperature	0. C to +50. C
Operating Humidity	5%-95%, Non-condensing
Integration Time	1/1000 to 3 sec.
Shutter	Rolling shutter with single frame capture
ROI	User Selectable
Auto Exposure	Automatic / Manual
White Balance	Automatic / Manual
Gain	Programmable /1 to 10X optimizable
Interface Connector	USB 2.0 high-speed interface
Dimensions (L x W x H)	3.85 x 2.00 x 2.75 inches
Lens Mount	C-Mount lens adapter



**3X Objective**

**1X Objective**

**NAT-09T with optional CP .35X**

## Ordering Information

### NAT-30/27T

USB Camera w/ 1.0X C-Mount Adapter  
 NAT-27CP-1.0x (high mag)  
 (NAT-27T Compatible)

### NAT-30/09T

USB Camera w/ 0.5X C-Mount Adapter  
 NAT-09CP-0.5x (med mag)  
 (NAT-09T Compatible)

### Options:

**NAT-21**, Fibre optic light ring

**NAT-20**, Fluorescent light ring  
 (NAT-27T)

**NAT-27CP-0.5x**, (med mag)

**NAT-09CP-0.35x**, (low mag)

Copyright © 2006 J microTechnology, Inc.



**JmicroTechnology**  
 3744 NW Bluegrass Place  
 Portland, OR 97229-7068  
 (503) 614 - 9509 [voice]  
 (503) 531 - 9325 [fax]

www.jmicrotechnology.com