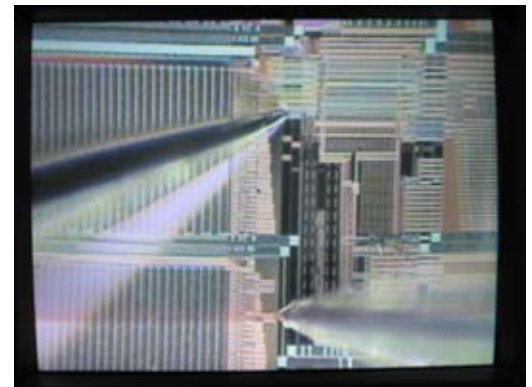
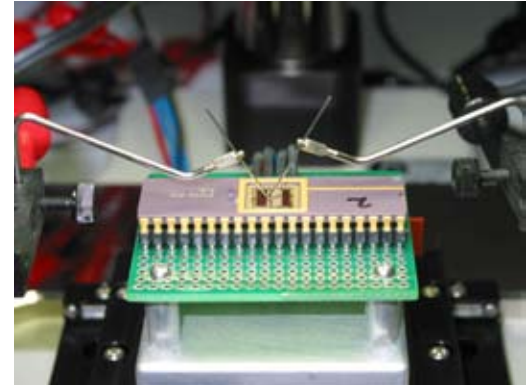
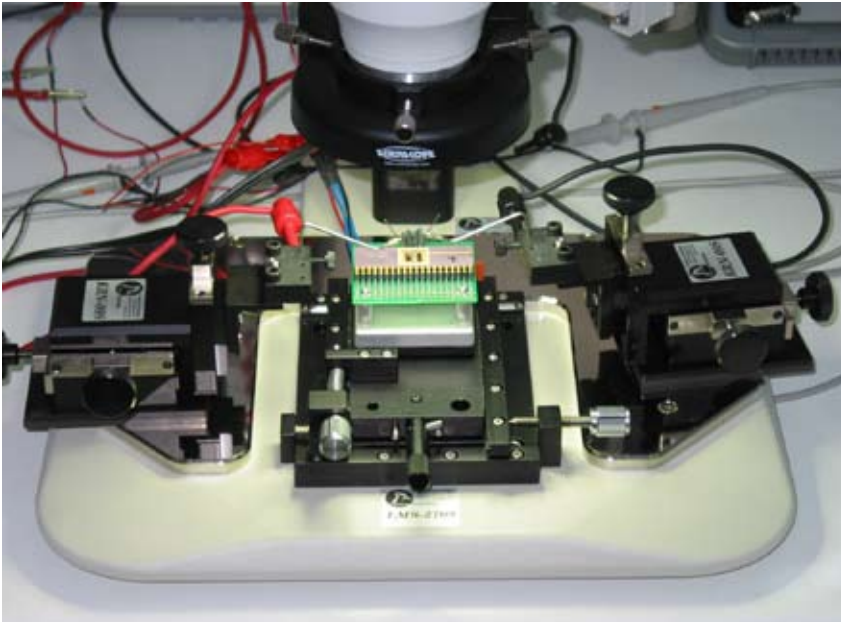




Basic Solutions
for Everyday
Test Problems



Open Lid Package IC Analysis

The LMS-2709 Laboratory Microprobe Station with a modified chuck to hold a small PWB with a DUT socket and support circuitry is an effective design verification tool for custom IC development. The device is held securely, it's electrical stimulation is supplied by real in use components, the internal nodes of the IC can be precisely contacted with probes controlled by precision probe manipulators and the optical magnification and camera allow visual analysis and documentation.

" When we got our first chip back from the foundry and it didn't work, we needed a probe station right away. I scoured the web and found many used probe stations starting around \$15k. When I stumbled upon J Micro Technology's site, I was surprised to find complete systems for half the cost of incomplete used ones. One day after I placed the order, I had a complete system on my desk and I was probing our chip. The workmanship and quality of the LMS-2709 are as good as any I've seen. The system is robust, simple to use, and affordable. It's exactly what we needed." Chip Gracey, Parallax

A basic manual probe station furnishes the important function of holding the part, positioning the probes and documenting the results.

Equipment List

- **LMS-27**
Laboratory Microprobe Station
- **NAT-27T(LMS-27)**
Trinocular Stereo Zoom Microscope
- **NAT-30**
USB Camera
- **NAT-20**
Fluorescent Ring Light
- **KRN-10S**
Magnetic Mount Positioner
- **KRN-NM**
Needle holder and needles